



## Application

The diaphragm meters are suitable for a wide range of domestic, commercial and industrial applications. All meters are of steel construction with internal and external surfaces coated against corrosion, and are designed for natural, liquid petroleum and manufactured gases. The meters comply with the requirements of EN1359, and can be used for either primary or secondary metering.

## Sizes

3/4", 1", 1 1/4", 2", 3", 4".

## Connections

3/4" - 2" Swivel nuts for easy fixing - final thread is male tapered to BS21.

3" - 4" Swivel flanges to BS4504 NP16.

## Pressure

Maximum operating pressure : 500 mbar

Fireproof (HTB) up to 100 mbar

## Normal Operating Temperature

Gas Temperature : -20 °C to +50 °C

Ambient Temperature : -30 °C to +60 °C

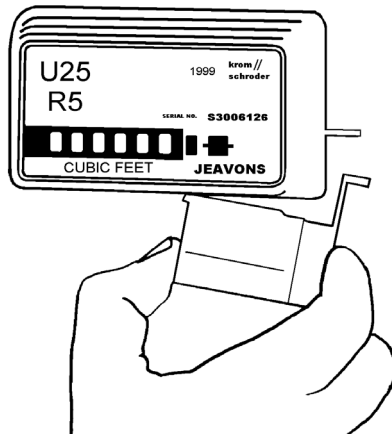
## Performance

All meters are EEC Badged for Primary Metering

Model	Standard	Flow Range	Accuracy
BK-G4 to BK-G100	EC 71/318	Qmin to 2 Qmin 2 Qmin to Qmax	+/- 3% +/- 2%
BK-G4 to BK-G40	OIML International Organisation of Legal Metrology	Qmin to 0.1 Qmax 0.1 Qmax to Qmax	+/- 3% +/- 1 ½ %

## Options

Meters can be fitted with a unique low frequency pulse output switch which can be removed and replaced in service, providing the facility for a remote read out as and when required. The fitting of the pulse output switch does not interfere with the legal index seal.



## IN-Z31 Reed Contact Switch

Voltage:  $U_{MAX}$  12 Vdc  
Current:  $I_{MAX}$  10mA

## METRIC READING (Cubic Metre) STEEL CASE DIAPHRAGM METERS

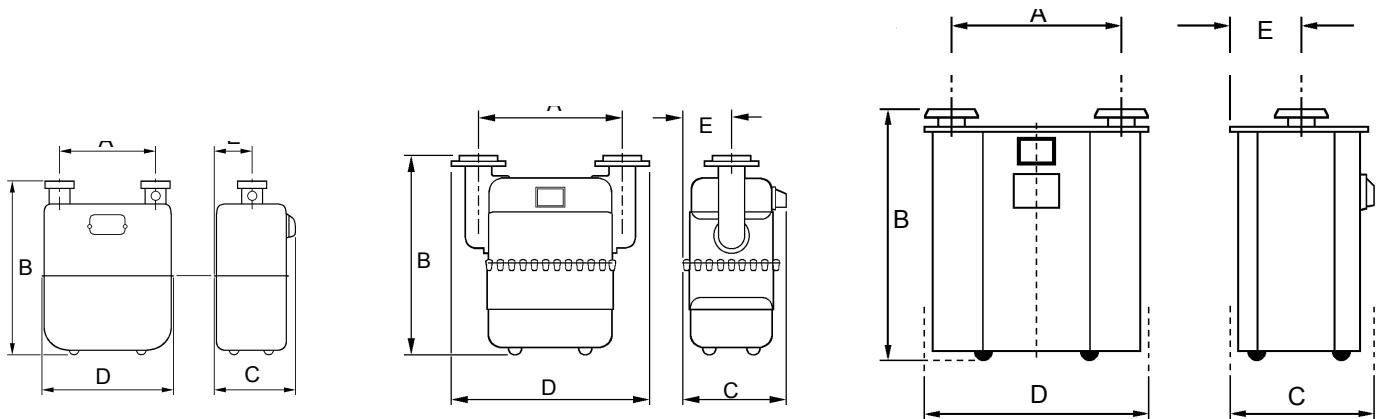
Model	Meter Connection	Optional Nut & Liner	Flow Range Actual m <sup>3</sup> /hr		Dimensions					Wt Kg	Pulse Value
			Qmin	Qmax	A	B	C	D	E		Pulse per m <sup>3</sup>
BK-G4 (110)	1" BS746	3/4" BSPT	0.04	6	110	214	157	194	67	1.9	100
BK-G4 (152)	1" BS746	3/4" BSPT	0.04	6	152.4	262	163	226	71	3.0	100
BK-G6	* Special	1" BSPT	0.06	10	250	312	218	334	85	4.3	100
BK-G10	1 1/4" BS746	1 1/4" BSPT	0.1	16	152.4	341	219	264	100	4.3	10
BK-G16	2" BS746	2" BSPT	0.16	25	250	358	234	405	108	5.7	10
BK-G25	2" BS746	2" BSPT	0.25	40	280	429	289	465	138	10	10
BK-G40	80mm NP16	-	0.40	65	510	645	352	710	170	33	10
BK-G65	80mm NP16	-	0.65	100	640	725	391	840	192	47	10
BK-G100	100mm NP16	-	1.00	160	710	990	497	910	243	130	1

\* The BK-G6 meter comes with a European thread and is supplied with a nut & liner as standard

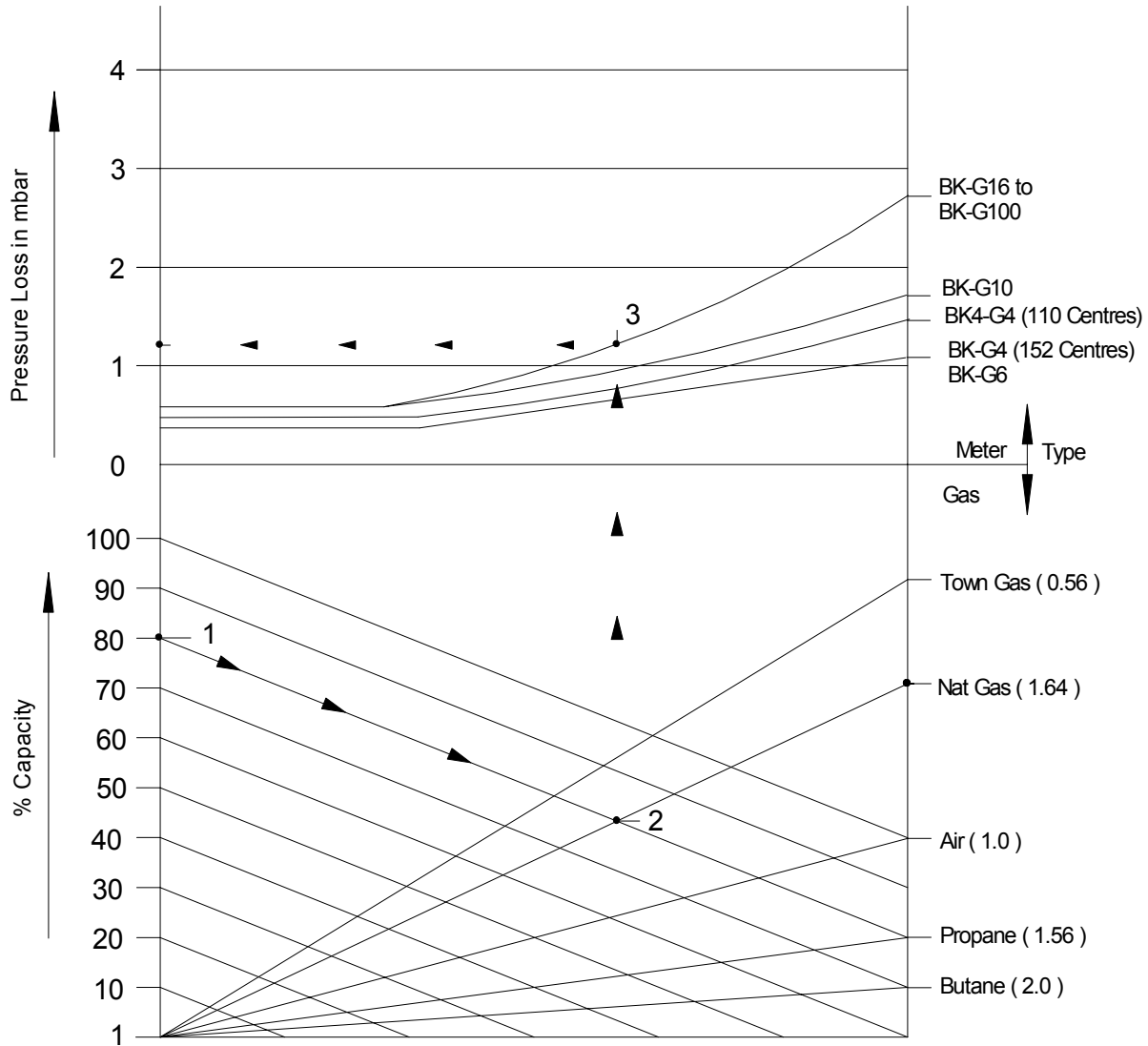
Size: Rc3/4 to Rc2

Size: 80mm NP16

Size: 100mm NP16



Pressure Loss Data Chart



Example:

Meter Size : G25  
Capacity : 32 m<sup>3</sup>/hr  
Gas : Natural gas

1. Capacity 80%
2. Natural Gas
3. Meter
4. Pressure Loss 1.25 mbar at standard conditions

Elster Jeavons has a policy of continuous Product development and improvement and in consequence the information in this Leaflet may be subject to change or modification without notice.