

## GSM Water Logger SG-IP65-2P-GSM

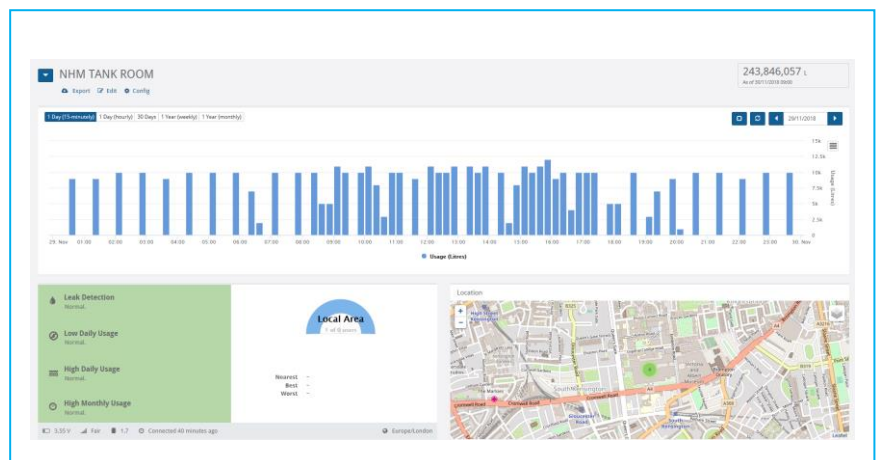
Elcomponent provides a range of GSM smart gateways ideally suited for energy management and meter data collection.

GSM Water Logger is an advanced meter information (AMI) device for collecting data from remote meters via GPRS. It is a low cost, fast option for implementing automatic meter reading or smart meter strategies. Installation can be done in as little as 10 minutes and meter data starts being accumulated.

Once installed, the device reads the meter every 15 minutes and stores this in its memory. Once a day it connects with the server and sends the readings from the previous 24 hours. All data is displayed in the online software or can be viewed via smart phone or tablet.

Special features include replaceable sim card, field replaceable battery, simple installation and configuration using sms, leak alarms, high flow and low flow alarms.

- Internal Memory
- Pulse Logging
- IP65 Rating
- 2 channels



Also compatible with our MW2 monitoring software

