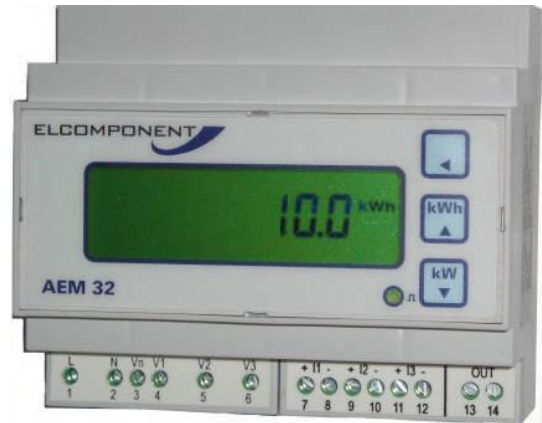


AEM32

3 Phase kWh & kW Meter

The AEM32 offers all the standard Elcomponent features of ease-of-use, simple set-up and large clear display, and combines them with even higher levels of accuracy, reliability and safety. Featuring fully isolated current inputs the meter can be specified with confidence for all applications where its sophisticated custom-designed measurement system will deliver exceptional accuracy regardless of load type. This performance is maintained even where harmonics are present, and on non-linear loads such as switchmode power supplies.

The AEM32 is suitable for all types of 3 phase systems including HV, and is fully programmable for any combination of current and voltage transformers. Set-up, as always, is simple and the meter automatically checks for and advises of any connection errors. Tough, generously sized terminal blocks and a choice of power-up options make life easy for the installer too, and the high spec volt-free pulse output ensures compatibility with all types of AMR or BMS system. For local reading, the crisp backlit display features an exceptional viewing angle



- ✓ **Low Cost**
- ✓ **High Accuracy (Class 1)**
- ✓ **Pulse Output**
- ✓ **Crisp, Backlit Display**
- ✓ **DIN Rail Mount**

