

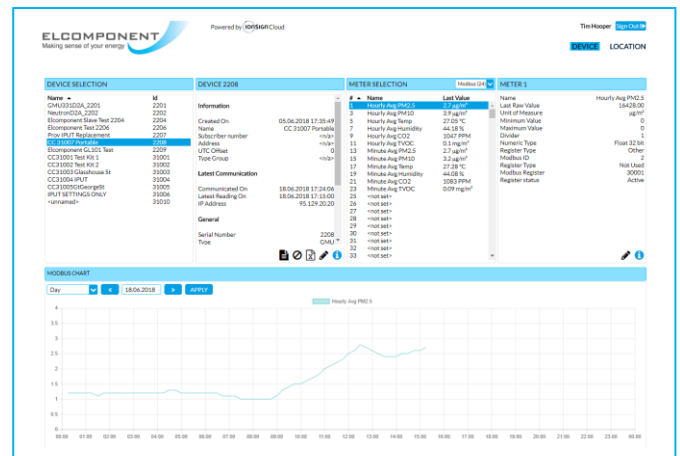
GSM Smart Gateway SG-GSM-i

The new SG-GSM-i smart gateway is ideally suited for energy management and general Modbus data logging.

The built in GSM, simple setup and small form factor make the SG-GSM-I an ideal building block for your remote data collection system.

Compatible with the Elcomponent MW2 Platform

- Internal Memory
- Programmable Modbus
- On board GSM modem
- Simple cloud based configuration



Specifications:

- Modbus communications (configurable) / 250 measurement capacity (Modbus registers)
- Data buffering for 13 000 measurements / 135 days buffer at 15 min logging interval
- Operating humidity 5%...95% non-condensing / Operating temperature -25degC ... +50degC
- Operating voltage 24 VDC / WxHxD 125 x 51 x 25mm

Applications:

- Remote energy metering for Modbus metering
- Air quality monitoring via Modbus sensors
- General data logging from Modbus sensors